

DOTMASTER Specifications



Dimensions

L x W X H = 700 x 700 x 680mm / 27.5 x 27.5 x 27"



PCB size

400 x 600mm / 15.7 x 23.6", Max. dispense area
320 x 420mm / 12.6 x 12.6" top clearance 23mm /
0.9", bottom clearance 13mm / 0.5"



Maximum Warpage

1mm up - 1mm down
(when working with distance holder)



Motion

Steppermotor controlled belt driven



Control

Integrated microprocessor controller combined
with MS-Windows™ PC software



Dispense speed

10.000 dots / hour at 1mm centres, 30ms dispense
and 100ms hold time, 5mm dispense height



Ordering information

SMDU-5000 DOTMASTER with laser pointer
SMDU-5001 DOTMASTER with camera + monitor
SMDU-5100 Positive displacement pump
SMDU-5200 Drill motor for PCB drilling



Interface

RS-232 serial interface



Power-Air requirement

115 or 230 Vac / 50- 60 Hz / 125 Watt
4 Bar / 60 PSI



Operating temperature

18-30 °C



Noise level

Noise emission during operation < 70 dB(A)



Weight

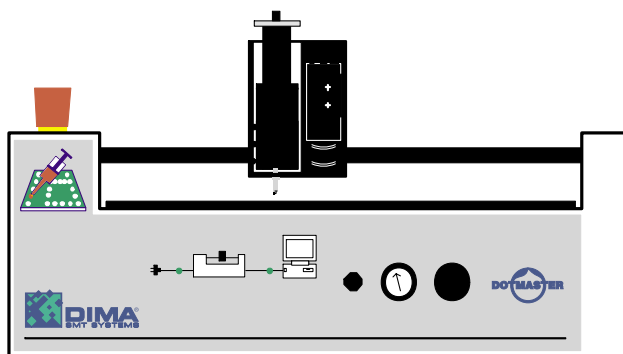
69 Kg

	Resolution	Teach Accuracy	Repeatability
X Axis	0.10 mm / 0.004"	0.10 mm / 0.004"	0.05 mm / 0.002"
Y Axis	0.10 mm / 0.004"	0.10 mm / 0.004"	0.05 mm / 0.002"
Z Axis	0.10 mm / 0.004"	0.10 mm / 0.004"	0.08 mm / 0.003"



DIMA SMT Systems NL B.V.
Beukelsdijk 2
5753 PA Deurne
The Netherlands
Tel. : +31 493 352 752
Fax : +31 493 352 750
Email : sales@dimasmt.nl
www.dimasmt.com

your agent:



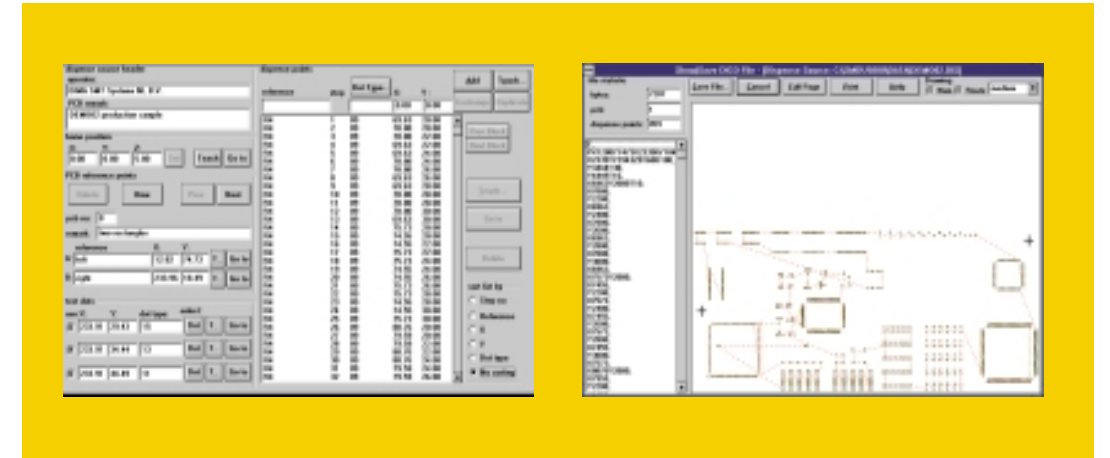
The Dotmaster

DIMA is a global integrated engineering company providing the electronics industry with a wealth of experience in the design of production facilities and manufactur-

ing equipment. Using advanced CAD design technology, coupled with a thorough understanding of customer specific needs, DIMA offers the ideal solution for dis-

pensing soldercream, adhesive and other materials onto PCBs. The Dotmaster can be used as an airpulse dispenser when combined with the optional positive

displacement pump. For prototypes of circuitboards the Dotmaster can be converted into a nc PCB drilling machine.



Key Features

- 10.000 dots / hour
- easy to use Windows™ user interface
- automatic optimization
- possible CAD download
- quick change PCB holder
- optional aligning camera with monitor

Distance holder

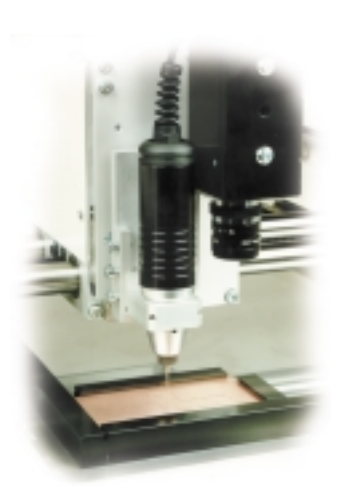
Dispensing needle with distance holder to ensure fixed distance between needle and PCB. The snap-on distance holder can easily be adjusted in height.

User interface

DIMA's software offers today's customer the ability to produce complex products giving maximum flexibility, lower processing cost and higher yields. Its unique capabilities offer quick, responsive, and informative one key operation

drastically reducing programming time. All required information about reference points, test dots, and dispense co-ordinates is available in one window. Dispense co-ordinates are automatically optimized for a minimum of production time.

The routing of the dispense head can be visualised with an on screen graphical plot function of the software. Also available are DIMA's CAD conversion utilities which can reduce programming time to minutes.



Airpulse dispense

Standard the Dotmaster comes as an Airpulse dispenser to be used for products with a low viscosity or for products with a higher viscosity and a less critical application. Syringe holder fits 5 and 10cc syringes.

Positive displacement

The optional positive displacement precision dispensing pump, allows you to dispense all kinds of materials with a constant dot size. Changes of temperature or viscosity of the product have less influence on the dot size. Pump fits 5, 10 and 30cc syringes.

PCB drill

The Optional drill head for drilling prototype PCBs can be changed with the dispense head within minutes.