

HYBRID Specifications

Dimensions HS100

Base l.w.h. = 1700 x 1200 x 1300mm

Board \ Work Table Parameters

Print Area: 450mm x 400mm max

Max. Boardsize: 40 x 40 to 520 x 400 mm

Board tooling Thickness Range 0,8 to 15 mm

Board Registration Fixed pins to suit board tooling edge clamp. For edge clamp tooling 0.8 mm minimum board thickness

Work Table X/Y adjustment + 10 mm radial adjustment +1°

Tooling Adjustable magnetic type 25 mm underside clearance.

Component Height

Top max. 15mm - bottom max. 25mm

Machine Accuracy

Machine Accuracy $\pm 25 \mu\text{m}$ @ 3 sigma

Machine Repeatability $\pm 10 \mu\text{m}$ @ 3 sigma

Machine Capability 0.3 mm pitch QFP 0201 chip

Screen Frame

Size 585 x 585 mm

Screen locking mechanism over user Interface

Squeegee

Universal squeegee head with metal or polyurethane squeegee

Print modus: print/print, print/flood, flood/print

Motion

DC servo with rotary encoder microprocessor controled

User Interface

PC keyboard with trackball and 15" TFT flat screen.

Windows XP® operating system and DIMA-soft® userinterface. User management for different acces levels

Vision System

ESI Correctplace®, Automatic board alignment

Cameras

2 Fiducial Cameras with CCD chip

Process Parameters

Print Speed 1-110 mm/sec, settings in 1 mm/sec increments.

(independent forward and reverse)

Maximum Print Stroke 600 mm.

(stroke and position software controled)

Squeegee unlimited deposits. Print Gap 0-25 mm in 0.1 mm increments.

Squeegee Pressure 0-20kg software controled in 0.1kg increments

Squeegee Delay 0-25 seconds in 0.1 second intervals

Squeegee Hop-Over 1-100 mm in 1mm increments

Hop-over Delay 0-25 seconds in 0.1 second intervals

Snap-off Speed 10-100% of descent speed in 1% intervals

Unlimited Menu Storage

Power-Air Requirement

110-220 Vac / 50 - 60Hz / 500 Watt

6 Bar / 85 PSI / 80 L-min

Operating Temperature

18 - 30 degree Celsius

Noise Level

Noise emission during operation < 70 dB(A),

Weight

Weight 480kg (1056lbs)

Ordering information

HS-100	Semi-Automatic full vision Stencil printer
HP-2032	Set of 320 mm wide metal squeegees
HP-2045	Set of 450 mm wide metal squeegees
HP-2132	Set of 320 mm wide urethane squeegees
HP-2145	Set of 450 mm wide urethane squeegees
HP-2500	Puck pack® adapter



DIMA SMT Systems NL B.V.
Beukelsdijk 2
5735 PA Deurne
The Netherlands

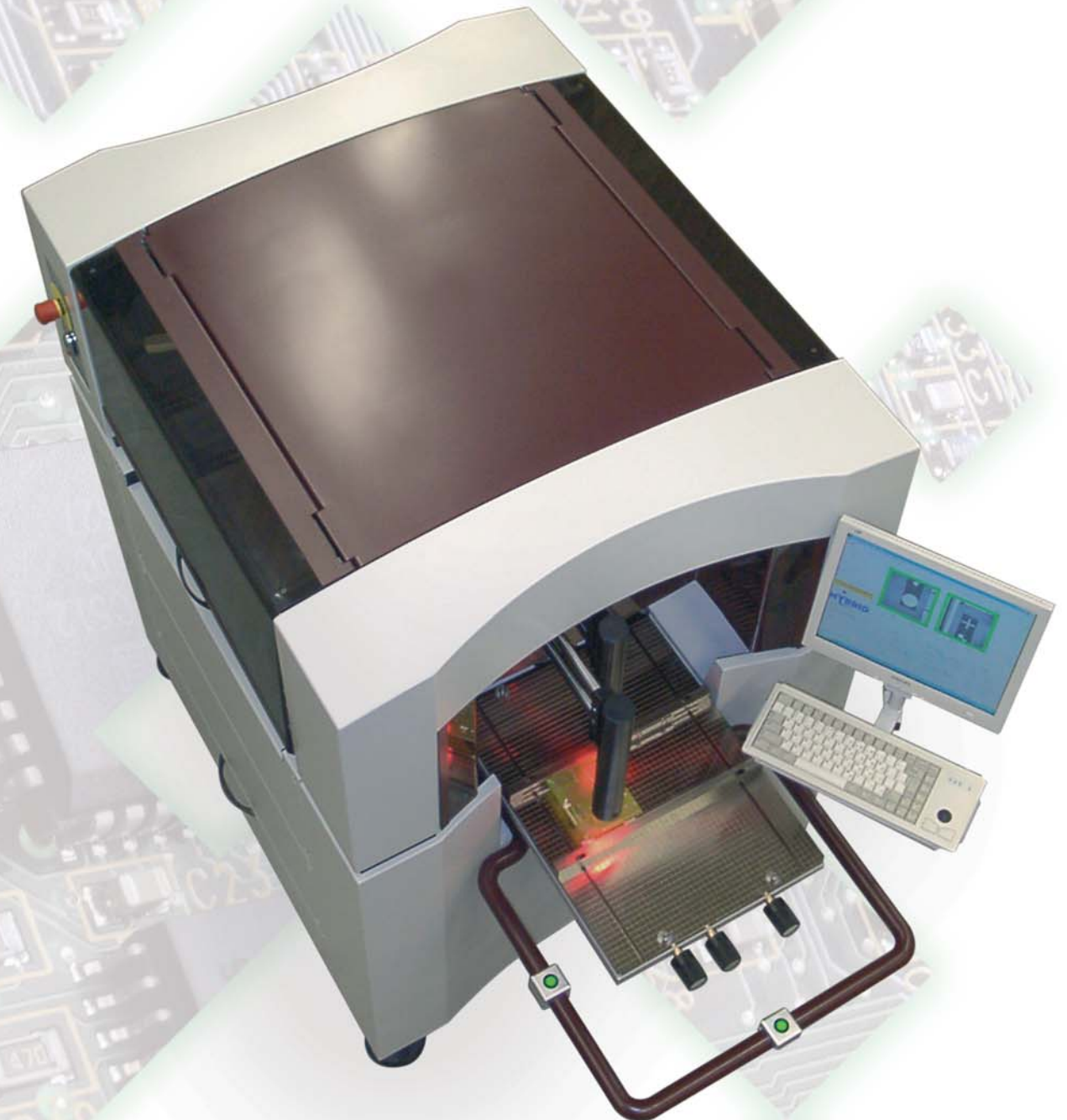
Tel: +31 493 352 752
Fax: +31 493 352 750
Email: sales@dimasmt.nl
Web: www.dimasmt.com

Your Agent

Specifications are subject to change without prior notice.

HS0311E1

HS100 stencil printer



"The HS-100 is a flexible, semi-auto, surface mount screen printer which is equipped with the ESI vision system for board alignment"

HYBRID

DIMA established in 1986 continues to offer state of the art developments pushing the boundaries of R&D, Striving for optimum performance, shorter production times, improved output and reduced costs. These goals have been achieved by close liaison and communication with DIMA's worldwide customer base. Global success has enabled DIMA to extract the knowledge required for continued advancement direct from the customer. This knowledge was of particular importance during the development of DIMA's range of Schreen Printers. The Hybrid Printers offer the very best price performance ratio currently available in the industry.

Key Features

- PC controlled running on Windows XP® and DIMA-soft®
- user interface displayed on a 15" TFT monitor.
- All machine parameters are programmable, and an unlimited number of files can be stored.
- Programmable speed of squeegee and speed of separation of the PCB and stencil for Fine Pitch.
- ESI Vision system for board alignment using 2 CCD cameras.
- Quick-lock camera support arms and Ergo-grip camera mounts for accurate positioning.
- Mylar frame for easy set-up of printer.

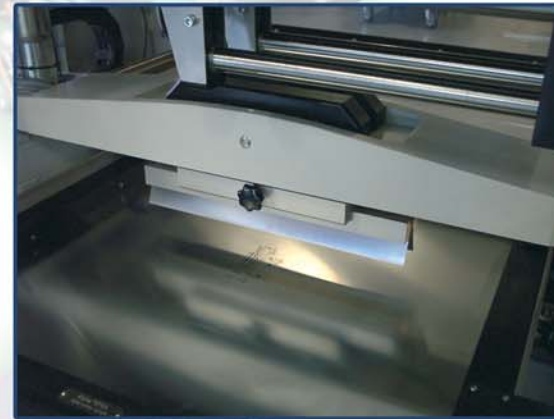
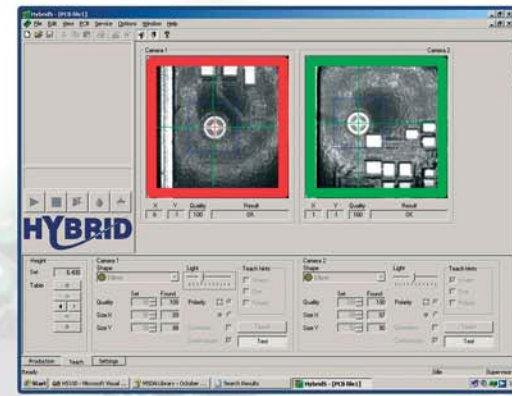
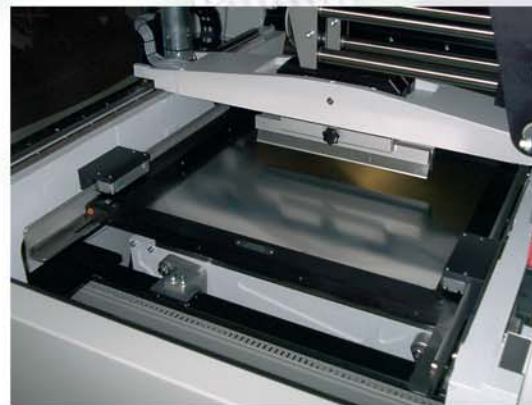


photo: printing engine

Rigid, Hightech

DIMA is introducing a new breed of semi-automatic screen printers belonging to the Hybrid family of production equipment. The heart of the machine is based on a rigid casting where the motor driven printing head is guided over the frame by linear bearings. All parameters like printing speed, squeegee pressure, lift off speed, printing stroke and maintenance parameters can be programmed from the windows based user interface. The printer comes standard with offline software to prepare production on networked computers at another location. The 15" TFT monitor gives a clear view on the process and the Board alignment. The DIMA maintenance programme ensures years of trouble free operation.

photo: Frame fixture



production window



machine settings

Software

The printer is equipped with the unique DIMA-Soft® user interface. Teaching the correct position of the board to the software is done by using the self learn modus of the vision system. Once the system knows the correct position of the board it will alarm the operator when the board position is not correct. At the same time the software will give the operator instructions about the direction that the PCB has to move. All printing parameters can be set by the software. User management software in combination with access passwords ensure full security. An unlimited number of programmes with different process parameters can be stored. For off-line productfile editing the Printer can be connected to the company network.

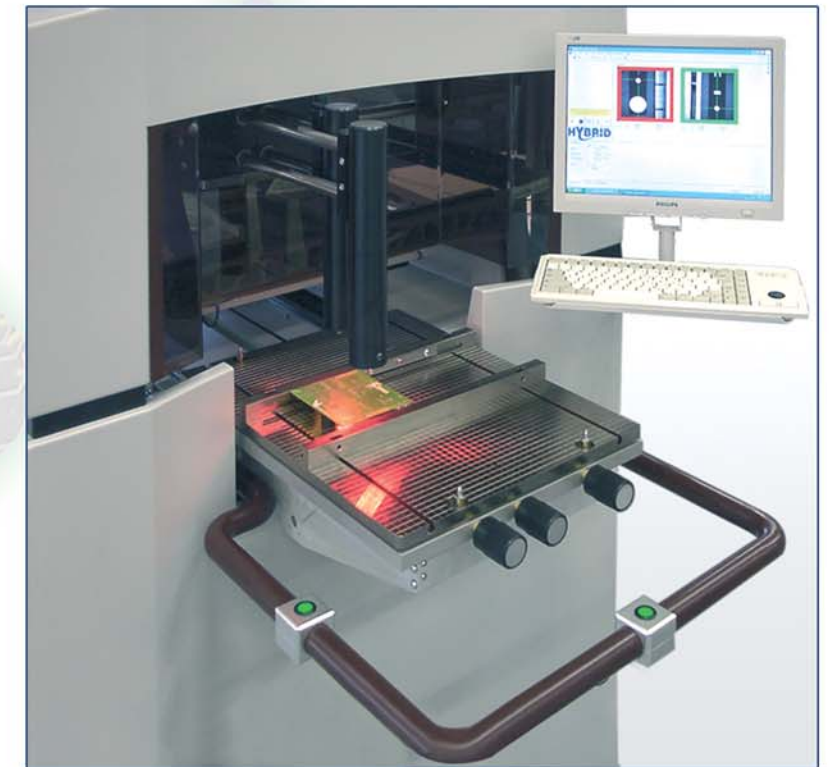


photo: Ergo-grip camera mount

Other equipment available from DIMA

- Convection reflow ovens
- Automatic glue and solder paste dispensing system
- Board handling equipment
- Production optimising software
- Tape and reeling equipment
- Manual pick and place
- Automatic pick and place
- For more information www.dimasmt.com